

# ZEEUWS VEILINGHUIS

## ZEELAND AUCTIONEERS

### CONDITION REPORTS - ASIAN ART

AUCTION 8 - 9 October 2019

Last update: 07 / 10 / 2019

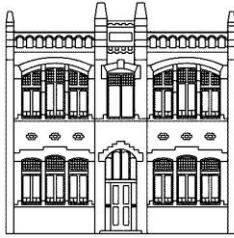
#### PLEASE NOTE:

a) Our general terms and conditions. Especially articles 2.1 - 2.3. We can email them on request.

b) If condition reports are updated or changed, we will mark the text in red.

Please check this list with condition reports before the start of the auctions, to check if condition reports have been changed.

1	Good condition.	29	All good condition. Can't see under frames.	47	Condition report available on request only.
2	Good condition. Baking error to the top of the belly.	30	Good condition.	48	Condition report available on request only.
3	Good condition.	31	1) good condition. 2) good condition.	49	Condition report available on request only.
4	Good condition. Some baking errors to the rim.	32	1) Glazing error to the ring. 2) Good condition.	50	Good condition.
5	Good condition.	33	Good condition. Overall some baking errors.	51	Condition report available on request only.
6	Good condition.	34	Chips to one ear.	52	Teapot: chips to the spout. Hairline and chips to the rim. Cups: 1) chips to the rim. 2) good condition. Dish: good condition.
7	Good condition.	35	Scratch and restored piece to the rim.	53	Condition report available on request only.
8	Good condition.	36	Good condition.	54	1) chip to the rim. 2) good condition.
9	Good condition.	37	Condition report available on request only.	55	Dragon: good condition. Man and lady: feet of both figures restored. The neck of the lady has been restored.
10	1) good condition. Originally pierced base. 2) good condition. Originally pierced base.	38	Good condition. Overall wear to the paint.	56	Cups: 1) good condition. Craquelé to the glaze. 2) good condition. 3) good condition. 4) good condition. 5) good condition. Dish with incense burner: good condition. Dish with separation: good condition.
11	1) good condition. 2) good condition. 3) good condition.	39	All in good condition.	57	Good condition.
12	1) good condition. 2) good condition. Some craquelé to the glaze. 3) good condition.	40	Good condition.	58	Condition report available on request only.
13	Good condition.	41	Good condition.	59	Condition report available on request only.
14	Good condition.	42	Small round: chip to the rim. Baking errors to the ring and body. Large round: overall fritting and baking errors. Square small: fritting to the rim. Chips and fritting to the ring. Square large: fritting to the rim. Baking errors to the body.	60	Overall some baking errors to the sculptures.
15	Good condition.	43	Baking errors to the lid. Chips to the rim of the box. Overall craquelé to the glaze.	61	Good condition. Baking error to the foot of the lady, connected to the base.
16	Good condition.	44	Pink: fritting to the rim. Chips to the inner and outer side of the neck. Overall bubbles to the body. Brown: good condition. Green small: good condition. Green large: good condition.	62	Good condition.
17	Good condition.	45	Condition report available on request only.	63	Some damages to the wings of the bird. Part of the tassels of the sword missing.
18	Good condition.	46	Condition report available on request only.		
19	Good condition. Overall craquelé to the glaze.				
20	Good condition.				
21	Good condition.				
22	Good condition.				
23	Good condition.				
24	Good condition. Can't see under frame.				
25	Good condition. Can't see under frame.				
26	Good condition. Can't see under frame.				
27	Good condition. Can't see under frame.				
28	All good condition. Can't see under frames.				



# ZEEUWS VEILINGHUIS

## ZEELAND AUCTIONEERS

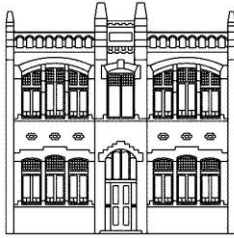
- |    |  |     |   |     |   |
|----|--|-----|---|-----|---|
| 64 | Good condition. Overall craquelé to the glaze.   | 95  | Chip to the ring. Overall craquelé to the glaze.                      | 131 | 1) baking errors to the inner and outer side. Fritting and baking errors to the ring and base. 2) baking errors to the inner and outer side. Fritting and baking errors to the ring and base. |
| 65 | Good condition.  | 96  | Fritting to the ring. Overall craquelé to the glaze.                  | 132 | Due to the size of this lot, no condition report will be available.   |
| 66 | Man with dragon: good condition. Man with tiger: good condition.                                     | 97  | Fritting to the ring. Overall craquelé to the glaze.                  | 133 | 1) hairline to the rim. Overall some baking errors. 2) chip to the rim, resulting in a hairline. Hairlines to the rim. Chip to the ring. Hairline to the rim of the cover.                    |
| 67 | Chip to one of the extremities.  | 98  | Good condition. Overall craquelé to the glaze.                        | 134 | Three plaques: good condition. One plaque: fritting to the rim.   |
| 68 | Good condition. Some baking errors.  | 99  | Good condition. Overall craquelé to the glaze.                        | 135 | Three snuff bottles in good condition. One with small chips to the lid.   |
| 69 | Good condition.  | 100 | Good condition. Overall craquelé to the glaze.                        | 136 | Good condition.   |
| 70 | 1) good condition. 2) good condition.  | 101 | 1) good condition. 2) good condition. 3) chip to the rim of one bowl. | 137 | 1) baking errors to the inner side. 2) small glazing error to the body.   |
| 71 | 1) good condition. 2) good condition. Both craquelé to the glaze.                                    | 102 | 1) good condition. 2) good condition.                                 | 138 | 1) traces of use to the inner side. Glazing errors to the pot. Baking error to the ring. 2) traces of use to the inner side. Damage, baking error and chips to the ring.                      |
| 72 | 1) good condition. 2) good condition. Both overall craquelé to the glaze.                            | 103 | Condition report available on request only.                           | 139 | 1) glazing error to the ring. 2) small baking error to the rim. Small glazing error to the ring.  |
| 73 | 1) good condition. 2) scratches to the inner side of the rim. Burned spots and craquelé to the body. | 104 | Good condition.   | 140 | Good condition.   |
| 74 | Hairline to the lower side of the chair and base. Fritting to the beard.                             | 105 | Good condition.   | 141 | Hairline to the ring.   |
| 75 | Chip to the ring. Overall craquelé to the glaze.   | 106 | Good condition.   | 142 | 1) baking error to the ring. 2) hairline to the rim. Baking error to the ring.  |
| 76 | Good condition.  | 107 | Good condition.   | 143 | Small baking errors to the base. Burned spots to the body, both ears are with restored piece: one above, one under.   |
| 77 | Good condition.  | 108 | All good condition. Can't see under frames.                           | 144 | Good condition.   |
| 78 | Good condition.  | 109 | Good condition.   | 145 | Baking errors to the ring.  |
| 79 | Good condition.  | 110 | Good condition.   | 146 | Good condition.   |
| 80 | Good condition.  | 111 | Good condition.   | 147 | Good condition.   |
| 81 | Some damages to the relief extremities.  | 112 | Restored chips to the rim.  | 148 | Baking errors to the ring.  |
| 82 | Good condition.  | 113 | 1) good condition. 2) good condition.                                 | 149 | Some wear to the paint.   |
| 83 | Good condition.  | 114 | 1) good condition. 2) hairline to the belly.                          | 150 | Bubbles to the glaze.   |
| 84 | Good condition. Overall craquelé to the glaze.   | 115 | Good condition.   | 151 | Good condition.   |
| 85 | Fritting to the ring. Overall craquelé to the glaze.   | 116 | Good condition.   | 152 | Small chip to one ear. Baking and glazing errors to the body.   |
| 86 | Good condition. Overall craquelé to the glaze.   | 117 | Good condition.   | 153 | Traces of use to the inner side. Fritting and chips to the rim. Fritting and baking errors to the base.   |
| 87 | Good condition. Some wear to the paint.  | 118 | Good condition.   |     |   |
| 88 | Good condition. Overall craquelé to the glaze.   | 119 | 1) good condition. 2) good condition.                                 |     |   |
| 89 | Some damages to the relief extremities. Overall craquelé to the glaze.                               | 120 | Good condition.   |     |   |
| 90 | Good condition.  | 121 | Good condition.   |     |   |
| 91 | Good condition.  | 122 | Good condition. Overall scratches and wear to the paint.              |     |   |
| 92 | Good condition.  | 123 | Damage to the flower basket.  |     |   |
| 93 | Glazing spot to the neck. Overall craquelé to the glaze.   | 124 | Good condition.   |     |   |
| 94 | Good condition.  | 125 | Good condition.   |     |   |
|    |  | 126 | Good condition.   |     |   |
|    |  | 127 | Burned spots to the ring.   |     |   |
|    |  | 128 | Good condition.   |     |   |
|    |  | 129 | Good condition.   |     |   |
|    |  | 130 | Large chip to the rim, partly restored.                               |     |   |



# ZEEUWS VEILINGHUIS

## ZEELAND AUCTIONEERS

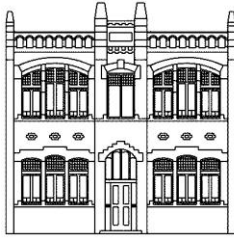
- |  |  |   |
|--|--|---|
| 154 Burned spots to the paint. Small baking error to the ring.                                   | rim. Small chips to the wooden base.                     | 312 Condition report available on request only.                               |
| 155 Hairlines to the rim.  | 183 Good condition.                                      | 313 Condition report available on request only.                               |
| 156 Chip to the rim. Traces of use to the inner side.  | 184 Condition report available on request only.          | 314 Condition report available on request only.                               |
| 157 Small baking errors to the inner side.   | 185 Good condition.                                      | 315 Condition report available on request only.                               |
| 158 Traces of use to the pot.  | 186 Small chip to the flower.                            | 316 Condition report available on request only.                               |
| 159 Fritting to the rim and both ears. Baking error to the ring.                                 | 187 With ball: good condition. With cub: good condition. | 317 Condition report available on request only.                               |
| 160 Baking errors to the inner side and the ring.  | 188 Good condition.                                      | 318 Condition report available on request only.                               |
| 161 Chips to the rim.  | 189 Good condition.                                      | 319 Condition report available on request only.                               |
| 162 Traces of use to the inner side.   | 190 1) good condition. 2) good condition.                | 320 Condition report available on request only.                               |
| 163 One plaque in good condition, two plaques with small glazing errors.                         | 191 Good condition.                                      | 321 Condition report available on request only.                               |
| 164 Fritting to the rim. Small scratches to the glaze.   | 192 Good condition. Can't see under frame.               | 322 Condition report available on request only.                               |
| 165 Fritting and hairline to the rim. Glazing error to the inner side. Baking error to the body. | 193 Good condition. Can't see under frame.               | 323 Condition report available on request only.                               |
| 166 Good condition.  | 194 Good condition.                                      | 324 Condition report available on request only.                               |
| 167 Glazing error and scratches to the pot.  | 195 Good condition.                                      | 325 Condition report available on request only.                               |
| 168 Good condition.  | 196 Good condition.                                      | 326 Condition report available on request only.                               |
| 169 1) glazing errors to the body. 2) chip to the rim. Baking error to the base.                 | 197 Good condition. Can't see under frame.               | 327 Good condition.   |
| 170 Five saucers in good condition. One with a hairline to the rim.                              | 198 Good condition. Can't see under frame.               | 328 1) missing branches and stone piece. 2) reglued pieces to the decoration. |
| 171 Some wear to the paint. Fritting to the ring.  | 199 Good condition. Can't see under frame.               | 329 Condition report available on request only.                               |
| 172 Good condition.  | 200 Good condition. Can't see under frame.               | 330 Condition report available on request only.                               |
| 173 Good condition.  | 201 Good condition.                                      | 331 Condition report available on request only.                               |
| 174 Condition report available on request only.  | 202 Good condition.                                      | 332 Condition report available on request only.                               |
| 175 Good condition.  | 301 Condition report available on request only.          | 333 Condition report available on request only.                               |
| 176 Due to the size of this lot, no condition report will be available.                          | 302 Condition report available on request only.          | 334 Condition report available on request only.                               |
| 177 Condition report available on request only.  | 303 Condition report available on request only.          | 335 Condition report available on request only.                               |
| 178 Condition report available on request only.  | 304 Condition report available on request only.          | 336 Condition report available on request only.                               |
| 179 Condition report available on request only.  | 305 Condition report available on request only.          | 337 Condition report available on request only.                               |
| 180 Condition report available on request only.  | 306 Condition report available on request only.          |   |
| 181 Small damages. Reglued pieces to the lid.  | 307 Condition report available on request only.          |   |
| 182 1) small damage to the floral decoration. Small chips to the wooden base. 2) Damage to the   | 308 Condition report available on request only.          |   |
|  | 309 Condition report available on request only.          |   |
|  | 310 Condition report available on request only.          |   |
|  | 311 Condition report available on request only.          |   |



# ZEEUWS VEILINGHUIS

## ZEELAND AUCTIONEERS

- |   |   |   |
|---|---|---|
| 338 Condition report available on request only.                         | 364 Condition report available on request only.   | 388 Condition report available on request only.         |
| 339 Condition report available on request only.                         | 365 Condition report available on request only.   | 389 Condition report available on request only.         |
| 340 Condition report available on request only.                         | 366 Condition report available on request only.   | 390 No condition report will be available for this lot. |
| 341 Condition report available on request only.                         | 367 Condition report available on request only.   | 391 No condition report will be available for this lot. |
| 342 Condition report available on request only.                         | 368 Condition report available on request only.   | 392 No condition report will be available for this lot. |
| 343 Condition report available on request only.                         | 369 Condition report available on request only.   | 393 No condition report will be available for this lot. |
| 344 Condition report available on request only.                         | 370 Condition report available on requests only.  | 394 No condition report will be available for this lot. |
| 345 Condition report available on request only.                         | 371 Condition report available on request only.   | 395 No condition report will be available for this lot. |
| 346 Condition report available on request only.                         | 372 Condition report available on request only.   | 396 No condition report will be available for this lot. |
| 347 Condition report available on request only.                         | 373 Condition report available on request only.   | 397 No condition report will be available for this lot. |
| 348 Condition report available on request only.                         | 374 Condition report available on request only.   | 398 No condition report will be available for this lot. |
| 349 Due to the size of this lot, no condition report will be available. | 375 Condition report available on request only.   | 399 No condition report will be available for this lot. |
| 350 Condition report available on request only.                         | 376 Condition report available on request only.   | 400 No condition report will be available for this lot. |
| 351 Due to the size of this lot, no condition report will be available. | 377 Condition report available on request only.   | 401 No condition report will be available for this lot. |
| 352 Condition report available on request only.                         | 378 Hairline to the rim, dent to the bottom and the ring.   | 402 No condition report will be available for this lot. |
| 353 Condition report available on request only.                         | 379 Condition report available on request only.   | 403 No condition report will be available for this lot. |
| 354 Condition report available on request only.                         | 380 Hairline to the spout of the teapot, possibly another extra hairline closer to the spout. Dent to both cups. With traces of use.    | 404 No condition report will be available for this lot. |
| 355 Condition report available on request only.                         | 381 Cups: 1) chip to the rim. Small chip to the ring. 2) small chips to the ring. Saucer: 1) small chip to the ring. 2) good condition. | 405 No condition report will be available for this lot. |
| 356 Condition report available on request only.                         | 382 Condition report available on request only.   | 406 No condition report will be available for this lot. |
| 357 Condition report available on request only.                         | 383 Condition report available on request only.   | 407 No condition report will be available for this lot. |
| 358 Condition report available on request only.                         | 384 Condition report available on request only.   | 408 No condition report will be available for this lot. |
| 359 Condition report available on request only.                         | 385 Condition report available on request only.   | 409 No condition report will be available for this lot. |
| 360 Due to the size of this lot, no condition report will be available. | 386 Condition report available on request only.   | 410 No condition report will be available for this lot. |
| 361 Condition report available on request only.                         | 387 Condition report available on request only.   | 411 No condition report will be available for this lot. |
| 362 Condition report available on request only.                         |   | 412 No condition report will be available for this lot. |
| 363 To both top fungus a chip. Overall some scratches to the wood.      |   | 413 No condition report will be available for this lot. |



# ZEEUWS VEILINGHUIS

## ZEELAND AUCTIONEERS

- 414 No condition report will be available for this lot.
- 415 No condition report will be available for this lot.
- 416 No condition report will be available for this lot.
- 417 No condition report will be available for this lot.
- 418 No condition report will be available for this lot.
- 419 No condition report will be available for this lot.
- 420 No condition report will be available for this lot.
- 421 No condition report will be available for this lot.
- 422 No condition report will be available for this lot.
- 423 No condition report will be available for this lot.
- 424 No condition report will be available for this lot.
- 425 No condition report will be available for this lot.
- 426 No condition report will be available for this lot.
- 427 No condition report will be available for this lot.
- 428 No condition report will be available for this lot.
- 429 No condition report will be available for this lot.
- 430 No condition report will be available for this lot.
- 431 No condition report will be available for this lot..
- 432 No condition report will be available for this lot.
- 433 No condition report will be available for this lot.
- 434 No condition report will be available for this lot.
- 435 No condition report will be available for this lot.
- 436 No condition report will be available for this lot.
- 437 No condition report will be available for this lot.
- 438 No condition report will be available for this lot.
- 501 Neck shortened. Chips to the neck. Hairlines and damages all over the vase.
- 502 Bowl: fritting and hairline to the rim. Fritting and baking errors to the ring. Overall craquelé to the bowl. Vase: fritting and chips to the rim. Baking errors to the body. Fritting and baking errors to the ring. Overall craquelé to the vase.
- 503 Fritting to the rim. Glazing errors (damages) to the inner side. Fritting, baking errors and hairlines to the ring.
- 504 Baking errors and craquelé to the outer side of the charger. Glazing errors and burned spot. Baking errors to the ring.
- 505 Chips and fritting to the rim. Overall baking errors to the glaze. Some restored chips to the rim.
- 506 Fritting and chips to the rim. Baking errors to the outer side of the ring and base. Overall scratches to the charger.
- 507 Chips and fritting to the rim. Hairlines from the rim to the center. Craquelé and hairlines to the outer side. Baking errors to the ring. Baking errors, hairlines and star crack to the base.
- 508 Fritting, chips and hairlines to the rim. Burned spot to the glaze. Fritting and baking errors to the ring and the base.
- 509 Chip and fritting to the rim, hairline to the side. Overall some baking errors.
- 510 Fritting, chips and hairlines to the rim. Restored pieces to the rim. Baking errors and chips to the ring.
- 511 Chips and fritting to the rim.
- 512 1) chips and fritting to the rim. Baking errors to the handles. Chip to the ring. 2) chip to the rim, resulting in a hairline. Chips and fritting to the rim. Baking errors to the handles.
- 513 1) hairline to the rim, splitting in two hairlines to the neck. Chip to the ring. Chips to the rim of the cover reglued. 2) restored chip to the rim, resulting in a hairline. Restored chips to the rim. Glazing spot to the foot. Rim of the cover restored.
- 514 Chips and fritting to the ring. Baking errors to the rim.
- 515 Fritting and chip to the rim, small baking errors to the ring and base.
- 516 1) fritting and chip to the rim, baking error and craquelé to the ring and the base. 2) good condition.
- 517 Hairline and reglued piece to the rim. Baking errors to the ring.
- 518 Small baking error to the inner side of the vase.
- 519 Lid: fritting, hairline and restored pieces to the rim. Vase: baking errors to the body.
- 520 Lid: restoration to the top of the lid, restored chip to the rim, hairline to the rim. Pot: hairline to the rim and the body.
- 521 Fritting to the rim. Hairlines and damages to the body. Burned spots to the glaze. Baking errors to the ring.
- 522 1) fritting and baking errors to the ring. 2) good condition.
- 523 Fritting, chips, hairline and craquelé to the rim. Repainted and restored pieces to the neck and body. Hairline to the belly.
- 524 1) glazing error to the belly. 2) reglued pieces and chips to the rim. Glazing errors to the belly.
- 525 Large section of the rim reglued (two pieces), resulting in a hairline from the neck to the belly. The base probably with a filled hole.
- 526 Good condition.
- 527 Good condition. Cover missing.
- 528 Fritting to both spouts. Small restored piece to one spout. Hairline and restored piece to the belly. Small baking errors to the ring.
- 529 Reglued pieces to the lid. Big restored and reglued part to the belly. Star crack to the base.
- 530 1) chip and fritting to the rim. 2) fritting and hairline to the rim. 3) fritting to the rim and ring. 4) fritting to the ring. 5) fritting to the ring. 6) chip and fritting to the rim.
- 531 Two large pieces to the rim reglued. Hairline to the rim.

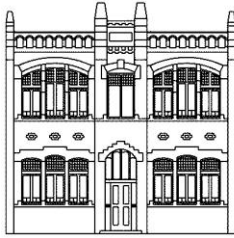


# ZEEUWS VEILINGHUIS

## ZEELAND AUCTIONEERS

- 532 Set: 1) fritting to the rim. 2) fritting to the rim and ring. 3) chips and fritting to the rim. 4) fritting to the rim. Chips and fritting to the ring. 5) fritting to the ring. 6) fritting to the rim and ring. Pair: 1) fritting to the ring. 2) chips and fritting to the rim and ring. Hairline to the rim.
- 533 1) small chip to the rim. 2) fritting to the rim. 3) hairline to the center.
- 534 Reglued pieces, fritting, chips and hairlines to the rims. Baking errors and chips to the rings.
- 535 Due to the size of this lot, no condition report will be available.
- 536 Due to the size of this lot, no condition report will be available.
- 537 Due to the size of this lot, no condition report will be available.
- 538 1) fritting and small chips to the rim. 2) fritting to the rim.
- 539 Fritting to the rim, glazing errors to the paint.
- 540 1) fritting and chips to the rim. Glazing error to the center. Baking error to the ring. 2) good condition. 3) fritting and chips to the rim. 4) good condition. 5) fritting to the rim.
- 541 1) chip to the rim. 2) hairline from the rim to the inner side. Baking errors to the ring.
- 542 Hairline from the rim to the center.
- 543 Small chip to the rim. Glazing error to the paint.
- 544 Due to the size of this lot, no condition report will be available.
- 545 Small chips to the rim. Fritting to the ring.
- 546 Hairlines from the rim to the body. Burned spots and glazing errors to the paint. Can't see under metal mounting.
- 547 Both good condition.
- 548 1) fritting to the rim. Baking errors to the ring. 2) fritting to the rim. Baking errors to the ring.
- 549 Good condition. Overall with baking/glazing errors.
- 550 1) fritting and restored pieces to the rim of the lid. Bubbles to the pot. 2) chips and fritting to the inner side of the rim of the lid. Bubbles to the pot.
- 551 1) large chips to the rim. Fritting and glazing errors to the ears. Burned spots to the body. 2) fritting and chips to the rim. Glazing errors to the ears.
- 552 1) fritting and chips to the rim. Baking errors to the inner side. 2) fritting and chips to the rim. Baking errors to the inner side. Fritting to the ring.
- 553 1) fritting to the rim. Glazing errors to the inner side. Baking errors to the ring. 2) glazing errors to the inner side. Baking errors to the ring. 3) glazing errors to the inner side. Fritting and baking errors to the rim. Hairlines from the rim to the inner side. Fritting and baking errors to the rim.
- 554 1) hairline from the rim to the ring. 2) restored pieces to the rim.
- 555 Good condition.
- 556 Bowl: small chips and hairline to the rim. Fritting to the ring. Dish: fritting to the rim. Glazing errors to the center.
- 557 1) small chips to the rim. 2) small chips to the rim. 3) good condition. 4) small chip to the rim.
- 558 Small chips to the rim.
- 559 Chips and possibly restored pieces to the rim.
- 560 1) fritting and chips to the rim. Hairline from the rim to the inner side. Baking errors and pierced hole to the ring. 2) chips and fritting to the rim. Chip and pierced hole to the ring. 3) fritting to the rim. Glazing errors to the inner side. Baking errors to the rim.
- 561 1) good condition. 2) large chip and fritting to the rim. 3) chips and hairline to the rim. 4) chips and hairline to the rim. 5) chips to the rim. 6) hairline and restored pieces to the rim.
- 562 Due to the size of this lot, no condition report will be available.
- 563 Baking errors and burned spots to the glaze.
- 564 Chips and fritting to the rim. Baking errors to the outer side.
- 565 Fritting, chips and hairline to the rim. Baking errors to the inner side. Fritting and baking errors to the ring.
- 566 Fritting and chips to the rim.
- 567 1) fritting to the rim. Glazing errors to the inner side. Baking errors to the ring and glazing errors to the base. 2) Fritting, chips, hairlines and damages to the rim. Baking errors to the inner side. Hairline to the outer side. Baking errors to the ring.
- 568 1) small chips, fritting and hairline to the rim. Fritting and chips to the ring. 2) small chips and fritting to the rim. Baking errors to the base.
- 569 1) chips to the rim and the ring. 2) chips to the rim and ring. Baking errors to the base. 3) chips to the rim and ring. Baking errors to the base.
- 570 1) fritting and hairline to the rim. Chips to the ring. 2) fritting, chips and hairline to the rim.
- 571 1) fritting to the rim. 2) fritting and chips to the rim. 3) fritting and hairlines to the rim. 4) chips to the rim. Burned spots to all four chargers.
- 572 Fritting and chips to the rim. Glazing error to the paint. Fritting and baking errors to the ring.
- 573 Fritting and chips to the rim. Hairlines from the rim to the center. Baking errors to the ring, burned spots to the glaze.
- 574 Hairlines and fritting to the rim. Burned spots to the glaze.
- 575 Chips and scratches to the rim, burned spots to the glaze. Baking errors to the base.
- 576 Bowl: chips and fritting to the rim and ring. Dish: 1) chips and hairlines to the rim, baking error to the ring. 2) chips to the rim. Overall craquelé to both dishes.
- 577 Several restored pieces to the charger. Baking errors to the glaze.

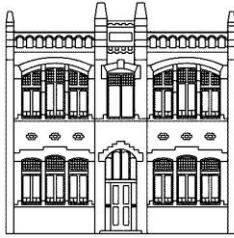




# ZEEUWS VEILINGHUIS

## ZEELAND AUCTIONEERS

- 578 Restored piece and hairline to the rim. Small chips and restored pieces to the ring.
- 579 Hairlines and restored pieces to the rim.
- 580 Fritting, baking errors and chips to the rim. Baking errors to the inner side and the center. Baking errors to the ring and base.
- 581 Cup: small restored piece to the rim. Saucer: small restored pieces to the rim. Small baking error to the ring.
- 582 Good condition.
- 583 Fritting and chips to the rim.
- 584 Hairlines and restored chips to the rim. Hairlines to the center, fritting to the ring.
- 585 1) fritting and hairline to the rim. Restored pieces and hairline to the ring. 2) fritting and hairline to the rim. Possibly restored pieces to the rim. Baking error to the ring. 3) fritting, chips and hairlines to the rim. Baking error to the ring. 4) fritting.
- 586 Fritting, chips and hairlines to the rim. Fritting, chips and baking errors to the ring and base. Burned spot to the glaze.
- 587 Chips and fritting to the rim.
- 588 Fritting and chips to the rim. Fritting and baking errors to the ring.
- 589 1) chip to the rim. Small baking error to the center and to the base. 2) small baking error to the ring. 3) craquelé to the center. Fritting and baking errors to the ring. Baking errors to the base. 4) fritting to the rim. Small baking errors to the ring. 5) good condition.
- 590 Good condition.
- 591 Good condition.
- 592 1) chips, fritting and hairlines to the rim. 2) good condition. 3) chips, fritting and hairline to the rim. 4) fritting to the rim. 5) chips, fritting and hairline to the rim. 6) chips and fritting to the rim. Two pieces to the rim reglued. 7) chips and fritting
- 593 1) chips to the rim. 2) chips to the rim. 3) chips, fritting and hairline to the rim. 4) chips, fritting and hairline to the rim. 5) fritting to the rim. 6) chips to the rim.
- 594 Good condition.
- 595 Good condition.
- 596 1) good condition. 2) chip to the rim. 3) star crack to the base. 4) good condition. 5) good condition. 6) fritting to the rim. 7) chip to the rim. 8) fritting to the rim. 9) good condition. 10) good condition.
- 597 1) good condition. 2) chip to the rim. 3) chip to the rim, hairline and baking error to the center. 4) baking errors and fritting to the rim. 5) hairline to the rim. Baking errors to the ring and back. 6) chip to the rim.
- 598 1) fritting to the rim. 2) chips and fritting to the rim. Star crack to the center. 3) good condition. 4) fritting to the rim. 5) chips to the rim. 6) good condition.
- 599 Chips, fritting and baking error to the rim.
- 600 Hairline to the rim.
- 601 1) chips and fritting to the rim and ring. 2) chips and fritting to the rim and ring.
- 602 1) fritting to the rim. Overall craquelé to the glaze. 2) fritting and hairlines to the rim. Overall craquelé to the glaze. 3) fritting and hairline to the rim. 4) chips and fritting to the rim and ring. 5) chips and fritting to the rim. 6) chips and fritting.
- 603 Fritting to both handles. Baking errors to the ring.
- 604 1) fritting to the rim. 2) good condition.
- 605 Glazing error and hairline to the center.
- 606 Bowl: fritting and chips to the rim. Charger: fritting and chips to the rim. Glazing error. Baking errors and pierced hole to the ring.
- 607 Fritting to the rim.
- 608 Fritting to the ring.
- 609 1) fritting and small chips to the rim. 2) fritting to the rim.
- 610 1) small chips, fritting and hairline to the rim. 2) baking errors and chips to the ring.
- 611 1) chips and hairlines to the rim. 2) chips to the rim. Baking errors to the ring. 3) restored pieces to the rim. Baking errors to the ring.
- 612 Small chip to the rim. Baking error to the base.
- 613 1) fritting and small chips to the rim. Baking errors to the ring. 2) good condition.
- 614 Small bowl: star crack to the base. Large bowl: fritting to the rim. Hairlines from the rim to the ring.
- 615 Fritting to the rim. Fritting and baking errors to the ring.
- 616 1) chips to the rim, resulting in a hairline. 2) Fritting, chips and hairline to the rim.
- 617 1) Reglued pieces, chips and hairlines to the rim. Chips resulting in hairlines from the rim to the base. 2) fritting, chips and reglued pieces to the rim. Chip resulting in hairlines to the center. Baking errors to the ring. Star crack to the base.
- 618 1) fritting to the rim. Glazing errors to the inner and outer side. Fritting to the ring. 2) chips to the rim. Baking errors to the inner side. 3) fritting and chips to the rim. Fritting to the ring.
- 619 1) chips to the rim and ring. Baking errors to the inner side. 2) Large chip to the ring. Baking errors to the inner side.
- 620 1) chips to the rim and ring. Fritting and baking error to the ring. 2) chips to the rim and ring. Fritting and baking error to the ring.
- 621 Chip and fritting to the rim. Star crack to the belly.
- 622 Broken and restored. Overall with craquelé.
- 623 Fritting, chips and glazing errors to the rim. Small baking errors and some wear to the inner side of the bowl.
- 624 Chips to the rim.

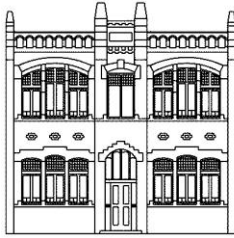


# ZEEUWS VEILINGHUIS

## ZEELAND AUCTIONEERS

- 625 1) hairline to the rim. 2) chip to the rim resulting in a hairline.
- 626 Fritting and chips to the rim. Baking errors and chips to the ring.
- 627 Chips and hairline to the rim.
- 628 Fritting, small chip and hairline to the rim. Small baking errors to the ring.
- 629 Fritting to the rim. Traces of use to the inner side. Baking errors to the ring and the base.
- 630 1) hairlines to the inner side. 2) fritting and chips to the rim. 3) fritting and chips to the rim. Baking errors to the ring. 4) fritting to the top of the lid. Small chips to the rim of the pot. Hairline from the rim to the belly of the pot.
- 631 Due to the size of this lot, no condition report will be available.
- 632 1) hairline and chips to the rim. Restored piece from the top to the lower part. 2) chips and hairlines to the rim. Long hairlines to the body. 3) fritting to the rim and small baking error to the ring. 4) chips to the rim, resulting in a hairline to the body. 5) chips to the rim. 6) fritting to the rim.
- 633 Due to the size of this lot, no condition report will be available.
- 634 Good condition.
- 635 Saucers: chips to the rim. Small baking errors to the ring. Cups: four cups with chips to the rim. Two cups with chips and hairlines to the rim.
- 636 Five cups in good condition. One cup with chips. Saucers: one with a baking error to the center, and one with chips to the ring. Four with good condition.
- 637 Saucers: 1) small chip to the rim, fritting to the ring. Burned spots to the center. 2) fritting to the rim, burned spots to the inner side and the center. Fritting to the ring. Cups: 1) two cups with baking errors to the inner side and the ring. One cup with a chip to the ring.
- 638 1) hairline to the body. Baking error to the ring. Cover completely restored. 2) hairline to the rim. Cover: restored pieces and some parts repainted.
- 639 Small chip to the lid and to the rim of the pot. Fritting and hairlines to the handle. Small chips to the ring of the pot.
- 640 Chip and hairline to the rim. Baking errors to the ring. Cover: hairline and restoration to the rim.
- 641 Cups: two cups in good condition, two with chips to the rim. One with chip and hairline to the rim, one completely reglued from two pieces and chips to the rim. Saucers: one in good condition, two with fritting and chips to the rim and ring. Two with hairlines to the rim, one with chips.
- 642 Teapot: good condition. Small vase: fritting to the rim. Chips to the ring. Cups: 1) chips to the rim. Glazing errors to the ring. 2) chips to the rim. Hairlines from the rim to the ring. 3) small chips to the rim. Baking errors to the inner side. 4) small chips to the rim.
- 643 Fritting to the rim and spout. Burned spots to the belly, small baking error to the inner side. Baking error and chip to the ring.
- 644 Good condition. Can't see under mount. Loose tap.
- 645 1) fritting and chips to the cover. Fritting to the ring. 2) Baking errors to the rim.
- 646 Due to the size of this lot, no condition report will be available.
- 647 Cups: 1) hairline and chip to the rim. 2) chips, hairlines and fritting to the rim. Fritting to the ring. 3) chip and hairline to the rim. 4) chips and fritting to the rim. 5) chips and hairline to the rim. Saucers: 1) good condition. 2) fritting to the rim. 3) reglued larger chip to the rim, resulting in a hairline. 4) chips and baking error to the rim. 5) good condition.
- 648 1) Small glazing errors to the pot. Small chips to the ring. 2) chip to the lid and spout. Baking error to the handle and ring.
- 649 1) Overall craquelé to the vase. Fritting and baking errors to the ring. Neck possibly shortened. Small damage to the neck. Can't see under silver mounting. 2) small hairline to the lid. Chip and baking error to the rim of the pot. Overall craquelé.
- 650 Baking error to the inner side of the lid. Small chip to the spout. Baking errors to the handle.
- 651 Due to the size of this lot, no condition report will be available.
- 652 Due to the size of this lot, no condition report will be available.
- 653 Cups: 1) chips to the rim. Damage to the rim, resulting in a hairline to the body. 2) chips and hairline to the rim. Saucers: 1) chips to the rim. 2) good condition. 3) chips to the rim. 4) chips to the rim, star crack to the base and center. 5) chips to the rim. Baking errors to the base.
- 654 Cups: 1) chip to the rim, resulting in a hairline. Chips and hairlines to the rim. 2) chip to the rim, resulting in a hairline. 3) chips to the rim, resulting in a hairline. Chips, fritting and hairlines to the rim. 4) chips to the rim, resulting in a hairline.
- 655 Cups: 1) good condition. 2) good condition. Saucers: 1) good condition. 2) baking error and chip to the ring.
- 656 Good condition.
- 657 Due to the size of this lot, no condition report will be available.
- 658 Baking errors to the ring. Can't see under silver mounting. Flower on the lid is loose.
- 659 Fritting and small chips to the rim. Fritting to the ring.
- 660 Hairline to the rim of the lid, burned spots and scratches to the pot. Small baking errors to the ring.
- 661 Fritting to the rim. Baking errors to the ring and base.
- 662 Lid: fritting and hairline to the lid. Pot: hairline to the rim. Burned spots to the glaze.

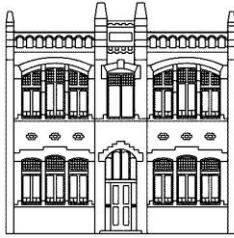




# ZEEUWS VEILINGHUIS

## ZEELAND AUCTIONEERS

- 663 Star cracks to the inner side of the pot. Burned spots to the paint. Small baking errors to the ring and base.
- 664 Chip and restored piece to the rim.
- 665 Fritting to the rim. Glazing errors to the body. Baking errors and fritting to the ring and inner side.
- 666 Hairlines to the rim, resulting in a star crack to the belly. Chips to the rim. Overall some craquelé and scratches to the base.
- 667 Chips and fritting to the rim.
- 668 Lid: chip to the rim ,craquelé to the inner side. Pot: fritting, chips and hairline to the rim. Overall craquelé to the pot. Star crack to the base.
- 669 Fritting to the rim of the lid. Baking errors to the inner side of the censer.
- 670 1) chips and hairline to the rim. Hairline to the body .Fritting to the ring and base. 2) chips to the rim. Fritting to the ring and base.
- 671 1) fritting and baking errors to the handle. 2) fritting, chips, baking errors and reglued pieces to the handle.
- 672 Fritting and small chip to the rim. Baking errors to the base.
- 673 1) fritting to the rim, baking errors to the ring and base. 2) fritting to the rim, baking errors to the ring and base.
- 674 Fritting and chips to the rim.
- 675 Small baking error to the base.
- 676 Condition report available on request only.
- 677 Fritting and chips to the ring.
- 678 Good condition.
- 679 Bowl: good condition. Dish: some wear to the paint Hairline to the base.
- 680 1) good condition. Wear to the paint, scratches to the surface. 2) hairline to the rim. Wear to the paint, scratches to the surface. 3) good condition. Wear to the paint, scratches to the surface. 4) good condition. Wear to the paint, scratches to the surface.
- 681 Hairlines and small chips to the rim. Some wear to the paint, baking errors to the ring.
- 682 Rim partly restored. Chips to the rim of the cover. Overall wear to the gold paint.
- 683 Completely restored from several pieces. Overall craquelé to the glaze.
- 684 Fritting to the rim. Burned spots to the glaze.
- 685 Chip to the ring.
- 686 Baking errors and chips to the ring.
- 687 Small baking error to the inner side.
- 688 Good condition.
- 689 Good condition.
- 690 Small damages and hairlines to the rim. Craquelé to the glaze.
- 691 Good condition. Overall craquelé to the glaze.
- 692 1) good condition. Overall craquelé to the glaze. 2) hairlines to the rim, one resulting in a star crack to the belly. Overall craquelé to the glaze.
- 693 Chip to the rim, resulting in a hairline. Some wear to the paint.
- 694 Lid: fritting and chips to the rim. Jar: chip to the rim, resulting in a hairline to the body. Fritting and baking error to the ring.
- 695 1) small glazing errors to the paint. 2) small glazing errors to the paint, baking error to the ring.
- 696 Fritting and chip to the rim. Small baking errors and traces of use to the inner side. Hairline to the outer side. Fritting and chips to the ring.
- 697 Good condition. Some baking errors and overall craquelé to the glaze.
- 698 Fritting and hairline to the rim. Hairline to the outer side. Fritting and baking errors to the base.
- 699 Condition report available on request only.
- 700 Baking error to the ring.
- 701 Large piece to the rim reglued.
- 702 Craquelé to the saucer. Restored piece to the rim.
- 703 Good condition. Some baking errors.
- 704 Small glaze cracks/craquelé, damage and hairlines to the rim. Restored piece to the rim. Glue residues present on the feet, possibly been glued to a standard in the past.
- 705 Lidded jug: chips to the spout. Overall craquelé to the glaze. Lidded box: chips, fritting and hairlines to the rim. Overall craquelé to the glaze. Cover restored.
- 706 Small chips to the rim. Hairlines, baking errors and restored pieces to the inner side. Baking errors to the ring.
- 707 Chips to the rim.
- 708 1) baking errors to the ring. 2) baking errors to the ring.
- 709 1) baking errors to the rim. Small damages to the paint. 2) fritting to the rim.
- 710 Good condition.
- 711 Good condition.
- 712 Chips and fritting to the rim. Restored piece to the neck of the figure. Possibly restored piece to the handle.
- 713 Small burned spots to the glaze.
- 714 Restored chips to the rim.
- 715 Chips and hairlines to the rim, with restored piece.
- 716 Good condition.
- 717 Lid: small chip to the inner side. Box: small baking error to the rim and inner side. Hairline to the ring.
- 718 Fritting and hairlines to the rim. Some wear to the paint. Baking error to the ring.
- 719 1) glazing error and fritting to the pot, baking error to the ring. 2) possibly small restored piece to the lid. Fritting and small baking error to the handle.
- 720 Due to the size of this lot, no condition report will be available.
- 721 1) chips and fritting to the rim. Some wear to the paint. 2) chips and hairline to the rim. Some wear to the paint. 3) chips and hairlines to the rim. Some wear to the paint.



# ZEEUWS VEILINGHUIS

## ZEELAND AUCTIONEERS

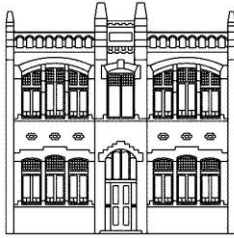
- 722 1) small baking error to the ring. 2) hairline, fritting and chip to the rim. Some wear to the paint.
- 723 Good condition.
- 724 Restored and reglued pieces to the lid.
- 725 Some wear to the paint.
- 726 1) restored from several pieces. 2) star crack to the base. 3) fritting and chip to the rim. 4) good condition. 5) chips to the rim. 6) good condition. 7) chips and hairlines to the rim. Chips to the ring. 8) hairlines, chips and fritting to the rim. 9) chips and fritting to the rim. 10) good condition.
- 727 1) chips and fritting to the rim. Chip to the rim, resulting in a hairline. 2) chips and fritting to the rim. 3) chips, fritting and hairline to the rim. 4) chips and fritting to the rim. 5) chip to the rim, resulting in a hairline. Chips and fritting to the rim. Chip to the ring. 6) chips and fritting to the rim. 7) chips and fritting to the rim and ring.
- 728 1) hairline to the rim. Baking errors to the ring. 2) chips and hairline to the rim, baking errors to the ring. 3) chips to the rim, resulting in hairlines. 4) chips to the rim, baking errors to the base.
- 729 1) handle reglued. Baking error to the rim. Fritting to the knob of the cover. 2) chip to the spout.
- 730 Fritting and small chips to the rim. Glazing errors to the painting. Baking errors to the ring.
- 731 1) good condition. 2) good condition. 3) good condition. 4) good condition. 5) old restorations with clamps, from several pieces.
- 732 1) baking error to the rim. 2) hairline to the rim. Fritting to the ring. 3) hairline to the rim. 4) restored chip and hairline to the rim. 5) good condition. 6) good condition.
- 733 Good condition. Some wear to the paint.
- 734 Reglued flat chip to the rim.
- 735 Good condition.
- 736 1) fritting, chips, restored chips and hairlines to the rim. Baking error to the ring. 2) fritting, chips, restored chips and hairlines to the rim. Baking error to the ring. 3) fritting and chips to the rim. Chip to the rim, resulting in a hairline from rim to center.
- 737 Chips to the rim.
- 738 Some crackle to the glaze of the rim. Can't see under mounts.
- 739 Chip, hairlines and restored piece to the rim.
- 740 1) glazing errors to the center. Baking error to the ring. 2) glazing errors to the center. Baking errors to the ring and base.
- 741 Fritting to the rim. Some wear to the paint.
- 742 1) fritting/chip to the ring. Star crack to the belly. Hairline to the rim. 2) fritting to the rim. Star crack to the belly and base.
- 743 Baking errors to the inner side of the lid.
- 744 1) chips to the top and the rim of the lid. Lid completely reglued from two pieces. Large star crack to the inner and outer side of the base of the pot. Overall crackle. 2) chips to the top of the lid. Chip and hairline to the rim of the lid. Star cracks to the inner and outer side of the base of the pot.
- 745 1) fritting and hairline to the spout. Fritting to the rim of the pot. 2) fritting and baking error to the lid. Star crack to the inner side of the belly. Small baking error to the ring.
- 746 Pair: 1) spout restored. Hairline to the handle. Chips and fritting to the rim of the cover. 2) hairlines to the spout. Hairline to the handle. Fritting to the rim of the cover. Other teapot: chips and fritting to the rim of the cover.
- 747 1) fritting to the ring. Hairline and fritting to the rim of the cover. 2) baking error to the neck. Fritting to the rim. Cover: chip to the ring, resulting in a hairline. Fritting to the rim.
- 748 Tea caddy: chips and fritting to the rim. Chip to the ring. Handle of the cover restored. Milk jug: chips to the rim of the cover. Small parts of the rim of the cover restored.
- 749 Cup: fritting, chips and hairline to the rim. Saucer: fritting and chips to the ring. Small baking error to the base.
- 750 Cup: small chips to the rim. Saucer: small chip to the rim.
- 751 Chips and reglued piece to the lid of the pot. Fritting and chips to the rim of the pot. Fritting and damage to the handle. Baking error to the ring. Cups: three in good condition, one with a hairline, one with chips, three with chips and hairlines. Saucers: two with good condition, one with hairlines and chips. Two with chips.
- 752 Good condition
- 753 1) chip to the rim. Star crack to the base and center. 2) hairline to the rim.
- 754 Large restored pieces to the bowl. Star crack to the base.
- 755 Due to the size of this lot, no condition report will be available.
- 756 Cup: good condition. Saucer: good condition.
- 757 Teapot: restored pieces to the lid. Fritting to the rim of the pot. Restored pieces to the handle. Hairlines and damages to the body. Cups: three with fritting and chips to the rim. Hairlines to the body. Baking errors to the ring. Two with chips to the rim, one in good condition.
- 758 Small chips and hairline to the rim of the pot.
- 759 1) fritting and chips to the rim. Some wear to the paint. Baking error to the ring, possibly restored. 2) fritting, chip and hairline to the rim. Some wear to the paint. Baking error and chip to the ring. 3) fritting, chip and hairline to the rim. Some wear to the paint. Baking error and chip to the ring. Possibly restored. 4) baking errors and chips to the ring.



# ZEEUWS VEILINGHUIS

## ZEELAND AUCTIONEERS

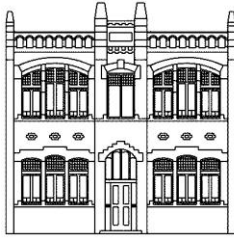
- 760 Fritting to the rim.
- 761 Vase: 1) fritting to the rim, baking error to the ring. 2) chips, baking errors and fritting to the rim and ring. Pot: 1) chips and fritting to the lid. Fritting to the ring. 2) small chips to the spout.
- 762 Cup: hairline to the rim. Saucer: hairline to the rim.
- 763 Due to the size of this lot, no condition report will be available.
- 764 Cups: 1) hairlines and chip to the rim. Fritting to the ring. 2) chips and hairlines to the rim. Two pieces restored to the rim, resulting in a hairline. Saucers: 1) hairline to the rim. 2) star crack to the base. Hairline to the rim.
- 765 1) fritting to the rim. 2) fritting, chips and hairline to the rim.
- 766 Due to the size of this lot, no condition report will be available.
- 767 Baking error to the rim.
- 768 1) chips and fritting to the rim. 2) chips and fritting to the rim. 3) chips and fritting to the rim. 4) chips and fritting to the rim. Wear to the paint. 5) chips and fritting to the rim. Star crack to the base. 6) chips and fritting to the rim. Wear to the paint.
- 769 Overall craquelé to the glaze. Possibly hairline to the rim.
- 770 1) chip and fritting to the rim and ring. Wear to the paint. 2) neck restored. 3) chips and hairline to the top attachment part of the handle.
- 771 Fritting and possibly restored pieces to the rim. Scratches and baking errors to the belly. Small baking error to the ring.
- 772 Bubbles and baking errors to the body.
- 773 Good condition.
- 774 1) chip to the ring. 2) small star crack to the inner side.
- 775 Restored chips and chips to the lid. Hairlines to the rim of the jar. Small star crack to the inner side of the jar. Baking error to the ring.
- 776 Good condition.
- 777 Good condition.
- 778 Fritting and chips to the rim.
- 779 Good condition.
- 780 Glazing error to the paint. Large star cracks to the base.
- 781 Good condition.
- 782 Burned spots to the paint.
- 783 Restored pieces from the rim to the neck.
- 784 Good condition.
- 785 Condition report available on request only.
- 786 1) damage to the rim, resulting in a hairline to the neck. 2) chips and fritting to the rim. Small star crack to the belly. Baking error to the ring. 3) damage to the rim, resulting in a hairline to the neck.
- 787 Due to the size of this lot, no condition report will be available.
- 788 Small baking errors to the belly.
- 789 Good condition.
- 790 Brush pot: good condition. Vase: good condition.
- 791 Square vase: chips to the rim and base. Chip to the neck. Wear to the polychrome decorations. Other vase: chip to the ring. Probably a burned spot to the belly.
- 792 Good condition.
- 793 Good condition.
- 794 Good condition.
- 795 Star crack to the neck. Wear to the paint.
- 796 Good condition.
- 797 Good condition. Overall craquelé to the glaze.
- 798 Five moving eyes damaged / missing.
- 799 Good condition.
- 800 Chips and hairline to the rim.
- 801 Good condition.
- 802 1) fritting, chips and hairlines to the rim. Baking errors to the ring. Overall craquelé and bubbles to the vase. 2) fritting, chips and hairlines to the rim. Baking errors to the ring. Overall craquelé and bubbles to the vase.
- 803 1) good condition. 2) small chip and hairline to the rim.
- 804 Good condition.
- 805 Good condition.
- 806 Traces of use and scratches to the rim. Traces of use to the inner side.
- 807 Chips to the lid.
- 808 Good condition.
- 809 Due to the size of this lot, no condition report will be available.
- 810 Four bowls with hairlines to the rim. Four bowls with hairlines to the rim and star crack to the base. Two bowls in good condition.
- 811 Fritting to the rim. some wear and scratches to the paint
- 812 Good condition.
- 813 Good condition.
- 814 1) good condition. 2) good condition. Baking errors to the belly.
- 815 Bowl: chips and fritting to the rim. Saucer: good condition. Baking error to the rim.
- 816 Good condition.
- 817 Fritting, hairlines and chips to the rim. Baking errors and glazing damage to the pot. Large baking error to the base, resulting in a hairline to the pot.
- 818 1) good condition. 2) good condition.
- 819 Overall craquelé. Wear to the glaze. Hairlines, chips, baking errors and restored pieces to all three bases.
- 820 Fritting and chips to the lid. Chip to the rim of the jar.
- 821 1) good condition. 2) hairline to the rim, chips to the ring.
- 822 Small chip to the ring of the lamp.
- 823 Baking error to the rim.
- 824 Ginger jar: restored chips to the rim. Hairlines to the rim. Fritting to the ring. Overall scratches and craquelé to the glaze. Bronze brush pot: condition report available on request only.
- 825 Good condition. Can't see under mountings.
- 826 Possibly restored to the rim. Can't see under mountings.
- 827 1) small chip to the ring. 2) small chip to the rim of the lid. Hairline to the rim of the bowl. Chip to the ring. Possibly small restoration to the rim. Baking error to the base.



# ZEEUWS VEILINGHUIS

## ZEELAND AUCTIONEERS

- 828 Baking errors to the ring.
- 829 Lid: good condition. Box: small chips to the rim. Baking error to the ring.
- 830 1) some wear to the paint. Baking errors to the ring. 2) some wear to the paint. Baking errors to the ring and base.
- 831 Reglued pieces to the rim. Fritting and chips to the ring.
- 832 Three are in good condition. One with hairlines to the rim. Baking error to the base.
- 833 Chip and hairlines to the rim.
- 834 Good condition.
- 835 Small chip to the ring of the bowl. Fritting and chips to the rim of the dish.
- 836 Good condition.
- 837 Fritting and chips to the rim.
- 838 Good condition.
- 839 Due to the size of this lot, no condition report will be available.
- 840 1) hole to the head and body of the boy. 2) hole to the body of the boy.
- 841 1) tiny fritting to the left ear tip of the horse. Overall craquelé to the glaze. 2) damage to the left ear of the horse. Overall craquelé to the glaze.
- 842 1) overall craquelé and baking errors. 2) overall craquelé and baking errors.
- 843 Glazing and baking errors to the body. Baking errors to the base.
- 844 Baking error to the body of the bird. Small baking errors to the base.
- 845 Man: good condition. Overall some wear to the paint. Lady: good condition. Overall some wear to the paint.
- 846 Damages to the handle of the vase. Fritting to the feet of the elephant. A hole to the belly of the elephant.
- 847 Baking errors to the back of the boy. Small damage to the lotus leaf. Small chip to one foot of the animal.
- 848 Small chip to the flute. Overall some baking errors.
- 849 Good condition. Can't see under frame.
- 850 Good condition. Can't see under frame.
- 851 Damages to the frame and the inner side. Hairlines to the lacquer. Can't see under frame.
- 852 Good condition. Can't see under frame.
- 853 Good condition. Can't see under frame.
- 854 Can't see under frame.
- 855 Can't see under frame.
- 856 Can't see under frame.
- 857 Good condition.
- 858 Good condition.
- 859 Damages to the wooden frame. Can't see under frame.
- 860 Good condition. Can't see under frame.
- 861 Hairlines to both wooden frames. Can't see under frame.
- 862 Can't see under frame.
- 863 Good condition. Can't see under frame.
- 864 Can't see under frame.
- 865 Good condition. Can't see under frame.
- 866 Good condition. Can't see under frame.
- 867 Small chip to the lid. Chips to the rim of the pot.
- 868 Chips and fritting to the spout. Fritting to the rim. Some baking errors to the extremities. Chips and fritting to the rim of the cover. Chips to the inner side of the rim of the cover.
- 869 Chips to the rim. Chip to the rim of the cover.
- 870 Damage to the lid. Fritting to the spout.
- 871 Good condition.
- 872 Condition report available on request only.
- 873 Lid: chips to the rim. Pot: fritting and small chip to the rim.
- 874 Small chip to the inner side of the lid.
- 875 Baking errors to the lid.
- 876 Chip to the spout.
- 877 Baking errors or possible hairlines around the spout.
- 878 1) chips to the spout. Fritting to the rim. Chips to the rim of the cover.
- 2) chips to the inner side of the rim of the cover.
- 879 1) fritting, chips, baking error, loss of glazing and damage to the rim. Chips and small damages to the body. Overall damage to the glaze. Craquelé to the vase. Chips ,fritting, baking error and small damage to the ring. 2) fritting, chips, damages and loss of glaze to the rim.
- 880 Condition report available on request only.
- 881 Condition report available on request only.
- 882 Overall craquelé to the glaze.
- 883 Chips to both ears. Damages to the hair. Overall craquelé to the horse. Tail reglued (in pieces). Glaze damages to the horse. Baking errors and hairlines to the base.
- 884 Condition report available on request only.
- 885 Condition report available on request only.
- 886 Condition report available on request only.
- 887 Condition report available on request only.
- 888 Condition report available on request only.
- 889 Good condition. Wear to the top of the base, due to usage.
- 890 Missing pieces to both ribbons, Damage and baking errors to the back, damage to the base and the ring.
- 891 Condition report available on request only.
- 892 Good condition.
- 893 Condition report available on request only.
- 894 Condition report available on request only.
- 895 Condition report available on request only.
- 896 Condition report available on request only.
- 897 Condition report available on request only.
- 898 Condition report available on request only.
- 899 Good condition.



ZEEUWS VEILINGHUIS  
ZEELAND AUCTIONEERS

900 Condition report available on  
request only.